



Phase-In • ARGO G

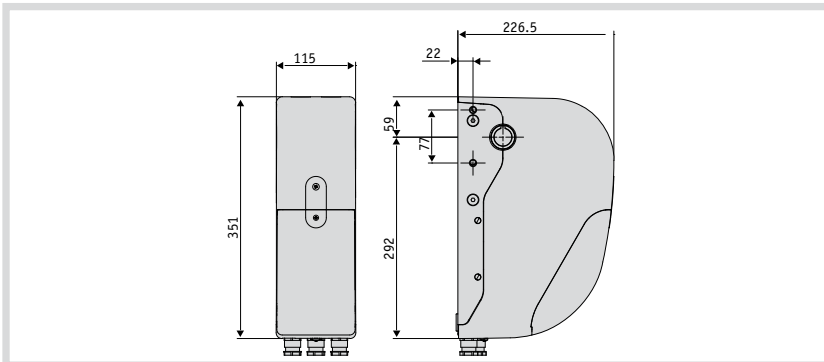
Low voltage electromechanical operator for industrial doors up to 35 m²



Product code	Description	Availability
P925206 00002	ARGO G	available
P925202 00001	ARGO	available



Dimensions



Advantages

MAXIMUM POWER:

80Nm maximum torque in the same size as the ARGO! Suitable for installation on sectional doors up to 35 m² with a maximum shaft speed of 18 rpm.

ACCURATE AND RELIABLE:

management of limit switches and 2 intermediate positions through of absolute encoder technology, 24 V power supply and industrial design: designed to guarantee maximum durability and reliability in the most severe conditions of use.

SAFE AND COMPLIANT TO EXISTING REGULATIONS:

control board with microprocessor technology: simple automatic setting of operating parameters allows the system to be certified in accordance with European Standards. Electronic torque, speed and slow down management system

COMPLETE RANGE:

teaming with the ARGO operator (55 Nm maximum torque, doors up to 20 m²), creates a complete range that can be used in any situation. It differs from the Argo for the grey shell, the lack of a courtesy light (generally not used in an industrial environment) and steal wire the release (no cord release available).

Plus



CONTROL BOARD WITH BUILT-IN RADIO RECEIVER

No need for installation of unaesthetical, impractical electrical panels on the wall.



ABSOLUTE ENCODER

Maximum limit switch position accuracy and guarantee of total door safety with stop and reverse on obstructions.



ZERO ADJUSTMENT KNOB

Quick and easy installation meet maximum precision in managing the limit switch position, speed and slow down.



PROGRAMMING DISPLAY

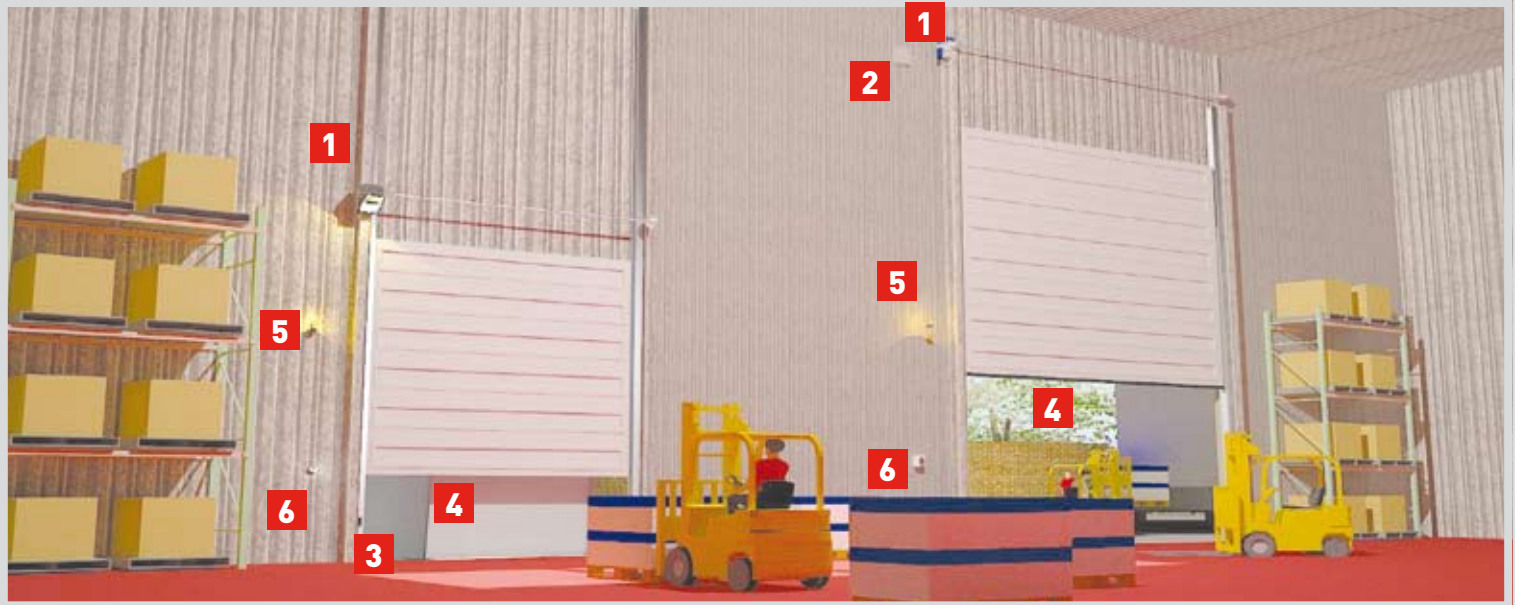
Easy and installer-friendly adjustment of limit switches through an intuitive LCD display.



Phase-In • ARGO G

Low voltage electromechanical operator for industrial doors up to 35 m²

▶ Installation example



1 Operator

2 Control unit

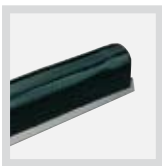
3 Photocells

4 Safety or passive edges

5 Flashing light

6 Control device

▶ Accessories



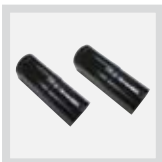
N190104 - BIR C
Rubber edge (h30 mm
price per metre)



N733421 - RCA
N733422 - RCA-L
Lever operated release
for ARGO with steel wire



D113719 00003 - RAY X
Flashing light with
built-in antenna for 24 V
motors



P111452 - CELLULA 180
Set of adjustable photocells
(180° horiz./ 20° vert.) For
outdoor use (range 30 m).
Power supply 24V ac/dc



P111273 - CELLULA 130
Set of self-aligning
photocells for outdoor
use (range 30 m). Power
supply 24V ac/dc



P123023 - RWS
Wall support for RAY X
flashing lights



D111750 - MITTO 2
Two-channel 433 MHz
rolling code transmitter



**D111457 00002 - PASSY
ANTENNA MONO**
One-way 2.45 GHz
illuminator antenna.
Together with the PASSY
TRANSPONDER, when
in the area covered by
the antenna. Control of
the automation in one
direction only.



**D111457 00001 - PASSY
ANTENNA OMNI**
Omnidirectional 2.45
GHz illuminator antenna.
Together with the
PASSY TRANSPONDER,
it activates the gate
operator in the area
covered by the antenna.
Control of the automation
both in and out.



**D111456 - PASSY
TRANSPONDER**
Dual frequency, 2.45 GHz
active transponder for
the detection of PASSY
ANTENNA and 433 MHz for
the command to the operator.